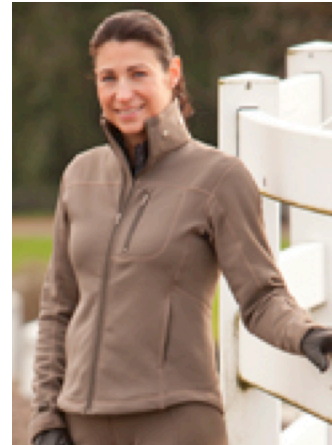


**FOR IMMEDIATE RELEASE**

**COMFORT AND DESIGN  
CREDITED FOR SALES SURGE  
OF WIND PRO® JACKET**

(Portland, OR) The exceptional characteristics of Polartec® Wind Pro® fabric combined with an equestrian inspired design have given rise to record bookings for Fun In The Saddle, Inc. (FITS), a Portland based maker of breeches and tops for the equestrian athlete.

The FITS *Stud Jacket*, sold in Graphite and Taupe, is adorned with antique nickel studs on its high neck collar and features matching metal zippers. President and CEO, Sheryl Rudolph, says the *Stud Jacket* is meant to be worn for virtually any cooler weather activity and promises that it is equally at home in the ring, on the trail, in the barn, or around town. "Cover stitch detailing makes it both athletic and feminine," she adds.



Best known for its technically rich breeches, Rudolph states that the *Stud Jacket* embraces design elements that have made the company's apparel so popular. The front zipper is two-way for maximum riding comfort. The jacket has no less than four pockets: an easily accessible zipped chest pocket for cell phone; a zipped sleeve pocket for treats and spacious hand warming pouches.

Polartec Wind Pro fabrics are extremely breathable yet provide 4 times more wind resistance than traditional fleece. This is the new "super fleece" that spans an unusually wide range of conditions; performs as both outerwear and insulation; and offers exceptional durability with soft, comfortable brushed fleece for style. FITS has added gusseted, Power Mesh in the under arms for better venting and flexibility.

***For more information, smaller, larger or other images:***

***Bill Bartlett***

***1.541.301.0300***

***[bill@orangecreativegroup.com](mailto:bill@orangecreativegroup.com)***

